

Capture One Pro 8 intro Jan Davis

Introduction

Phase One the company in Denmark made Capture One originally for digital backs for Hasselblad. Costs £175

Today it is recognised as the best RAW processing Software and is used by many medium format commercial photographers so I have been using it since 2007 for RAW development. I use Photoshop less and less as most of what I can bother to do can be done on RAW in C1 from card, catalogues thro to printing.

Capture One have comprehensive coverage of Blog, Help, and tutorials as well as Webinars, interactive sessions of one hour on specific areas of use. These webinars are my main source for learning and are available on You-tube.

Help and how to do everything

<http://help.phaseone.com/en/CO8/User-Interface.aspx>

Blog

<http://blog.phaseone.com/quick-round-trip-photoshop/>

Phase One Webinars etc.

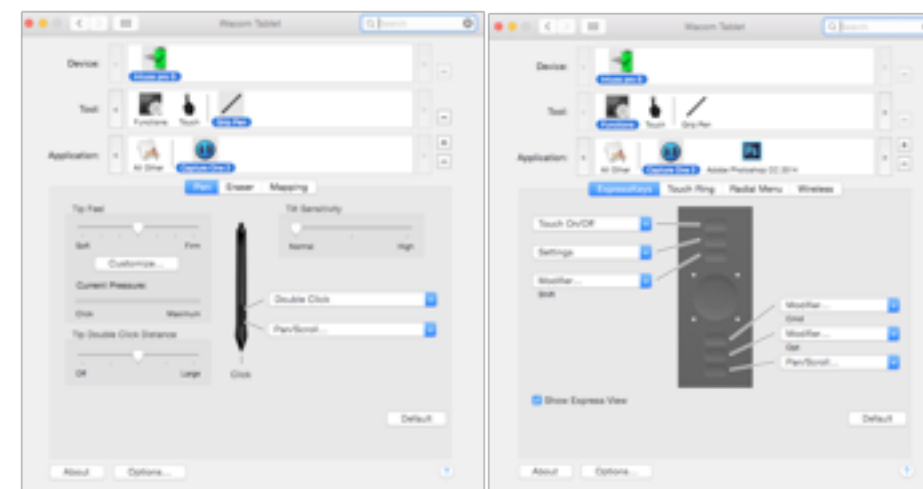
<http://www.phaseone.com/webinars>

Will cover the following subjects:

1. Use of Wacom tablet
2. Catalogues and Sessions organising images
3. Workspace adaptation from default, shortcuts
4. Base Characteristics Camera generic
5. White Balance, Colour Balance, levels, clarity
6. Black and white,
7. Styles and presets
8. Local adjustments, layer, clone, heal
9. Output, recipes, Printing, web gallery

Wacom Tablet

Settings Pen and buttons, almost default and don't use all possibilities



Catalogues and Sessions

As a tool to organise and keep files C1 is as good as any alternative and I have found. Good for keeping all my RAW files and being able to find sort put into collections yet still keeping a folder structure on my storage and back up discs. The original files can be on remote discs as you are working on high quality previews. The original file has to be on line to print or export.

Sessions are for self-contained shoots or projects by project one job where all the files are together and the can be moved to other team members for ease. As a first step this method can be useful on location situation and later the session put into the catalogue for integration with all other files.

Catalogues are very similar to Lightroom and I have so far 25000 images in my biggest catalogue without any slowness as the version Pro 8.2 has a new faster engine. User Collections can contain Projects, Groups, albums, smart albums

Workflow: Import files, choose where stored, give subfolder title, enable back up and select locations.

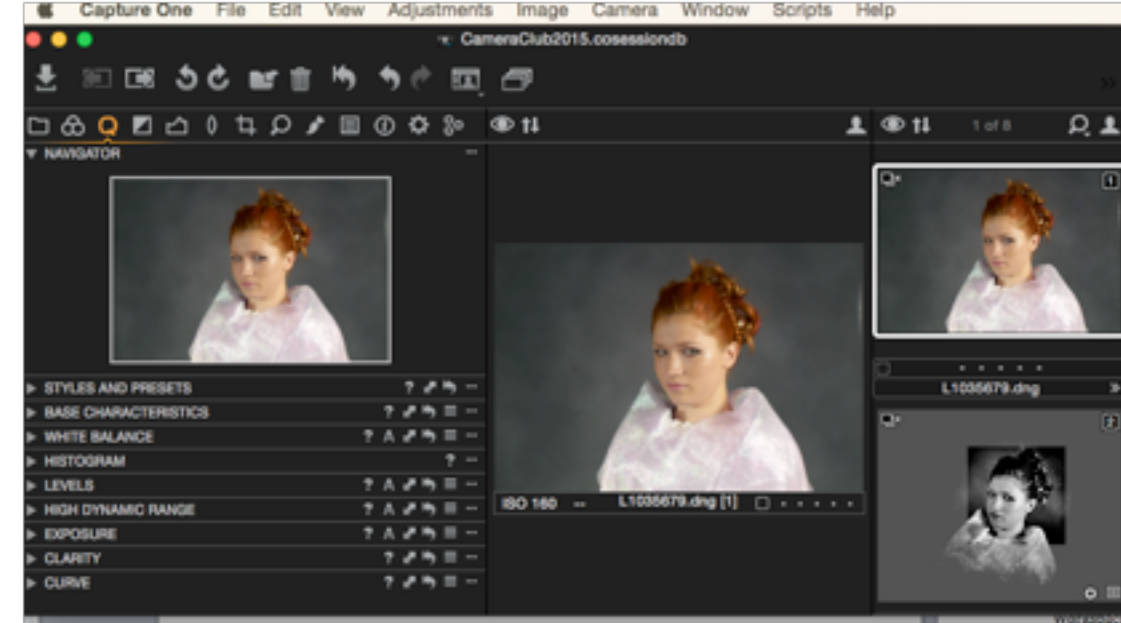
Workspace

Workspace is different from Lightroom as image in centre and it is easy to switch between toolbars and utilities. Workspace should be customised, as you like

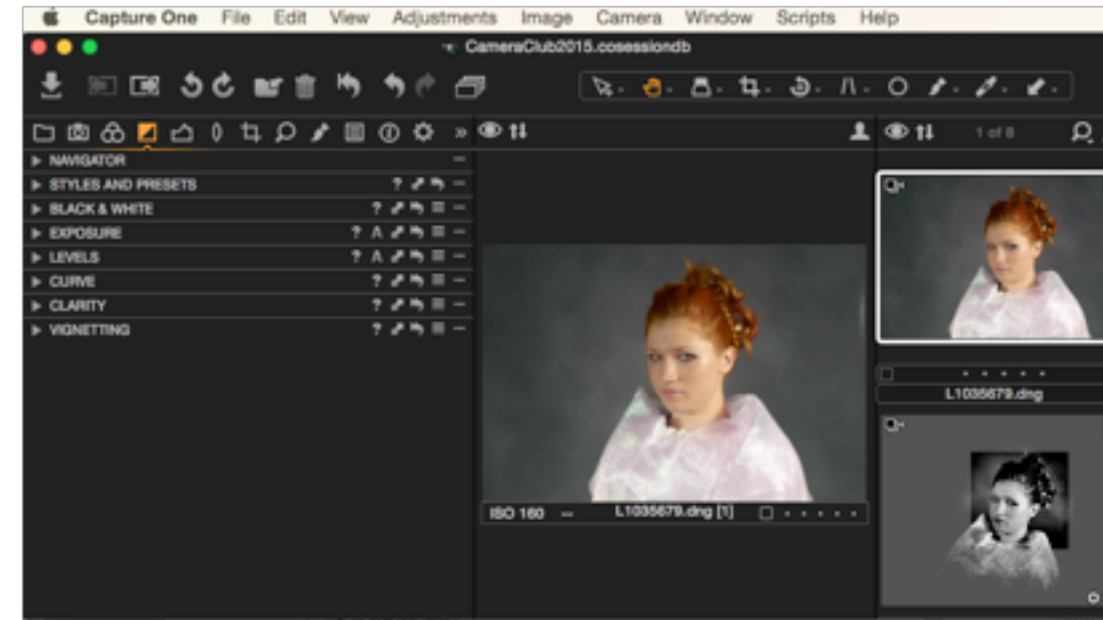
Workflow: Toolbar I use default and have browser on right. But have my Q tool tab to include utilities that I use a lot and have made a custom BW and removed tethered capture tab.

Shortcuts from keyboard very similar to Photoshop and you can add your own.

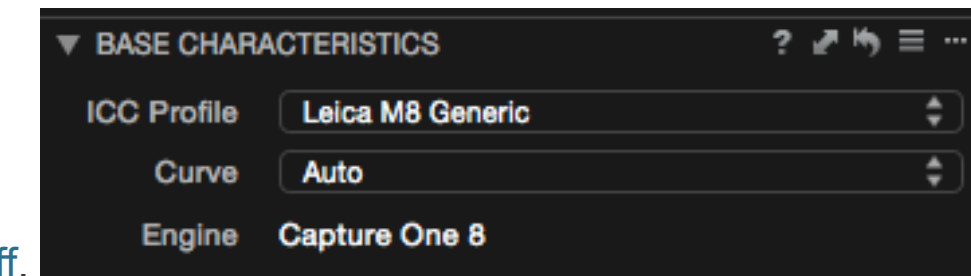
Here is my Q tool tab



Here is my BW tool tab



Base Characteristics, Camera profile



The [Lens Correction](#) tool includes predefined corrections for many popular lenses from major lens manufacturers. Corrections include distortion, [chromatic aberration](#), sharpness and [light falloff](#).

Phase One test all lenses and get camera profiles that are detected at download and automatically applied. Can be tweaked afterwards.

Workflow: WB picker to get WB

Highlights, Grey Scale

Notice RGB values at mouse location.

As Andy Beal said paper only shows information between 6 and 90%, 15 and 245 RGB values. I set my highlight and shadow on these settings.

Also taking Ansel Adams Grey Scale I am careful to ensure skin tones are in zone 6 or 7 i.e. between 40% ,153 for Caucasian and 30% 179 rgb for Northern white skin. Best get the skin tones right between the highlights and shadows.



Colour is the most praised feature and the new last month Colour Balance tool is amazing, still learning

C1 professor's blog <http://blog.phaseone.com/color-control-like-never-before/>

Guest Photographers have explained how colour balance tool is used. Here



Colour Editor tool

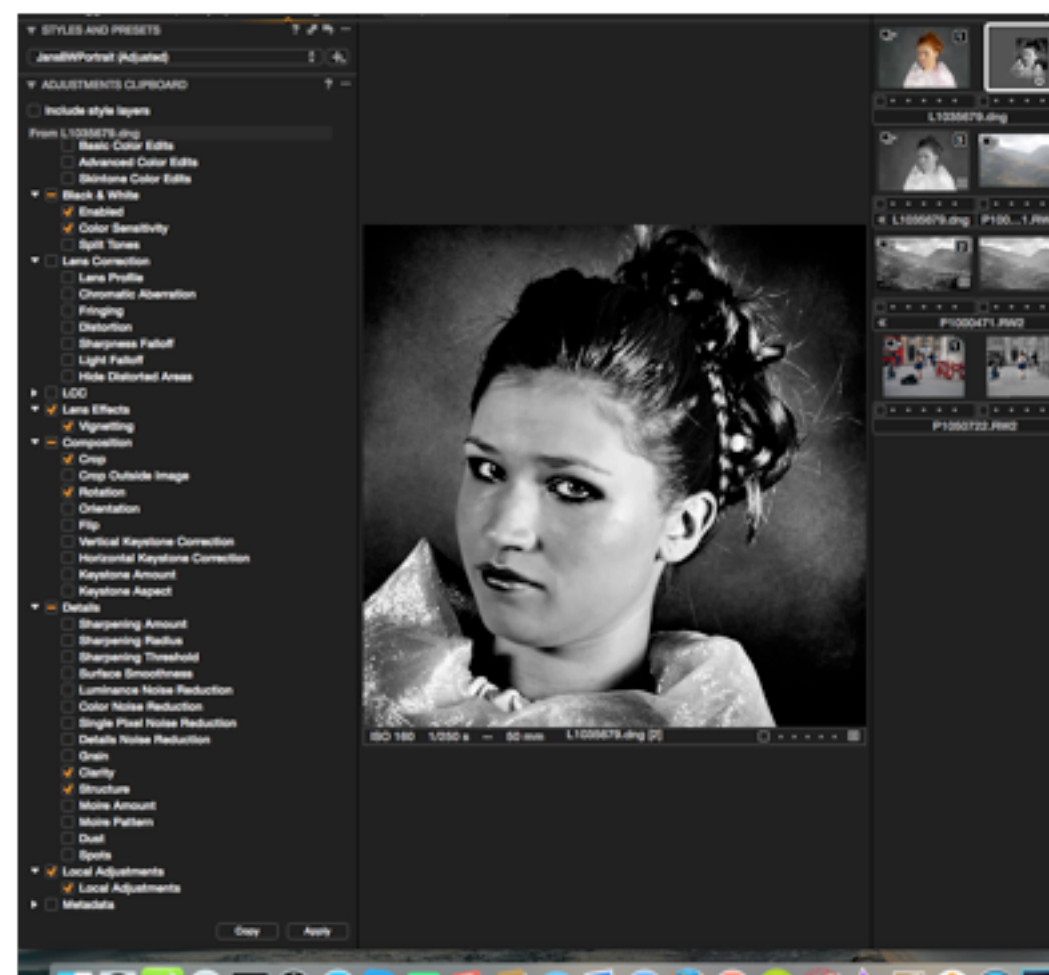
The colour editor tool has basic, advanced and skin tone for picking a colour, adjusting and applying range and then adjusting smoothness and uniformity, handy for skin tones.



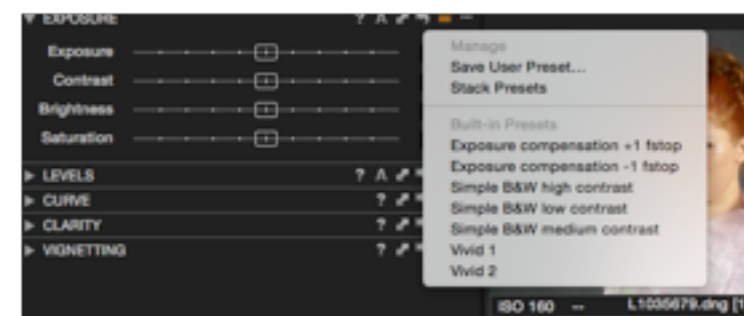
Styles and Presets

There are a series of styles, which are a mixture of a suite of adjustments that C1 provide and can be bought or downloaded covering such things as film simulations.

I have been using film simulation styles for a long time as they give monochrome with the actual film characteristic simulated as regards as colour filtering, contrast etc. Such as **Panchromatic film** a normal black-and-white **film** is sensitive to light of all visible colours. The adjustment clipboard tells you what has been adjusted



I have developed some of my own and saved and often start with a style. Presets are also available built in for each of the adjustment utilities.



Local Adjustments, layers, cloning, heal. Amazing!

Like Lightroom C1 has a system of layers that can be applied and local adjustments made on WB, Exposure, HDR, Sharpness, Clarity, Noise Reduction, Moiré, Colour Editor, Purple fringing

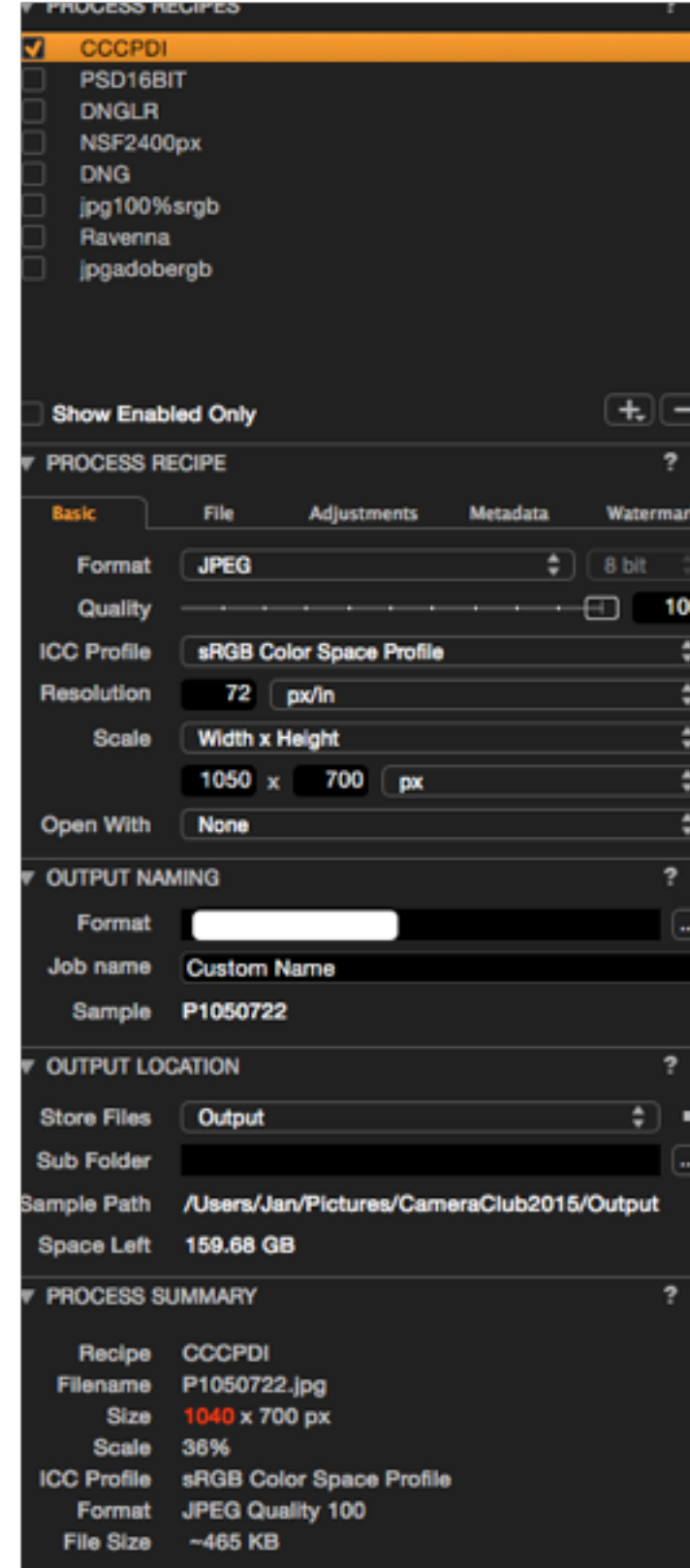


Workflow: Select brush, decide on opacity and size, and select M display mask and paint. Layer can be copied, inverted and then use adjustments wanted. Dodge burn as Photoshop by selecting brush at 10% opacity, turn off mask display, set exposure + or - 1 stop and paint until sufficient dodge or burn.

Export, Printing, Webpage

Process recipes and export locations.

Workflow set up recipe for export, location. Can also open in PS or LR



Printing

Workflow: select printer, paper handling, set profile, tweak margins, image size or contact sheet or multiple images etc. print



Workflow on sample images

Portrait

Presets Jan's portrait then crop, rotate, tweak clarity structure curve and start local adjustments face lips eyes

Landscape

1 Levels brought together, increased contrast, highlight reduction clarity structure, enable BW fiddle with colours.

Local adjustment, power lines clone, post heal and dodge sky and background area

2 apply pre-set and adjusted exposure and hdr

Photographer

Masked girl made copy and inverted for background, desaturated background to BW. Clarity levels contrast also adjusted Cloned out bag on new layer and healed untidy bit showing. Did lot to intensify blue in dress in skin tone in colour tool.

Jan Davis 27 April 2015